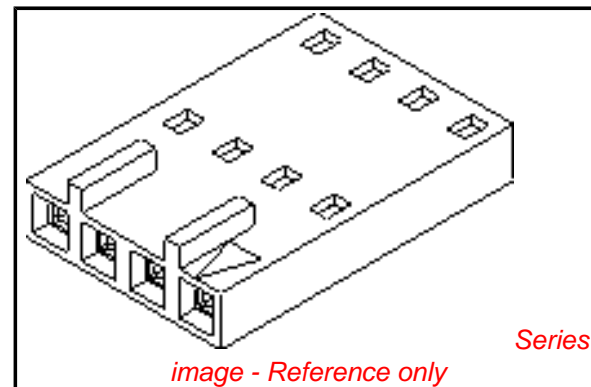


**PLEASE CHECK WWW.MOLEX.COM FOR LATEST PART INFORMATION**

**Part Number:** [0050579208](#)  
**Status:** **Active**  
**Overview:** [cgrid\\_sl\\_products](#)  
**Description:** 2.54mm (.100") Pitch SL™ Crimp Housing, Single Row, Version C, Front Ribs, 8 Circuits

**Documents:**

|   |  |
|---|--|
| <a href="#">3D Model</a>                      | <a href="#">Product Specification PS-70058 (PDF)</a> |
| <a href="#">Packaging Specification (PDF)</a> | <a href="#">Product Specification PS-70400 (PDF)</a> |
| <a href="#">Drawing (PDF)</a>                 | <a href="#">RoHS Certificate of Compliance (PDF)</a> |



**Agency Certification**

|     |           |
|-----|-----------|
| CSA | LR19980   |
| TUV | R72081037 |
| UL  | E29179    |

**General**

|                |                                   |
|----------------|-----------------------------------|
| Product Family | Crimp Housings                    |
| Series         | <a href="#">70066</a>             |
| Comments       | Version C                         |
| Overview       | <a href="#">cgrid_sl_products</a> |
| Product Name   | SL™                               |

**Physical**

|                               |                 |
|-------------------------------|-----------------|
| Circuits (maximum)            | 8               |
| Color - Resin                 | Black           |
| Flammability                  | 94V-0           |
| Gender                        | Female          |
| Glow-Wire Compliant           | No              |
| Material - Resin              | Polyester Alloy |
| Number of Rows                | 1               |
| Packaging Type                | Bag             |
| Panel Mount                   | No              |
| Pitch - Mating Interface (in) | 0.100 In        |
| Pitch - Mating Interface (mm) | 2.54 mm         |
| Stackable                     | No              |
| Temperature Range - Operating | -40°C to +105°C |

**Material Info**

|                 |           |
|-----------------|-----------|
| Old Part Number | 700660077 |
|-----------------|-----------|

**Reference - Drawing Numbers**

|                         |                    |
|-------------------------|--------------------|
| Packaging Specification | PK-70066-100       |
| Product Specification   | PS-70058, PS-70400 |
| Sales Drawing           | SD-70066-0071-0094 |
| Test Summary            | TS-70058-001       |

|   |  |
|---|--|
| <b>EU RoHS</b><br><b>ELV and RoHS</b><br><b>Compliant</b><br><b>REACH SVHC</b><br><b>Contains SVHC: No</b><br><b>Halogen-Free</b><br><b>Status</b><br><b>Not Reviewed</b> | <b>China RoHS</b><br> |
|---|--|

**Need more information on product environmental compliance?**

Email [productcompliance@molex.com](mailto:productcompliance@molex.com)  
 For a multiple part number RoHS Certificate of Compliance, [click here](#)

Please visit the [Contact Us](#) section for any non-product compliance questions.

**Search Parts in this Series**

[70066Series](#)

**Mates With**

[70544](#), [70546](#), [70554](#), [70556](#), [70543](#), [70545](#), [70553](#), [70555](#)

**Use With**

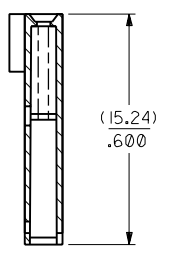
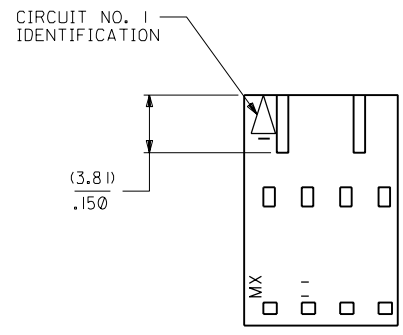
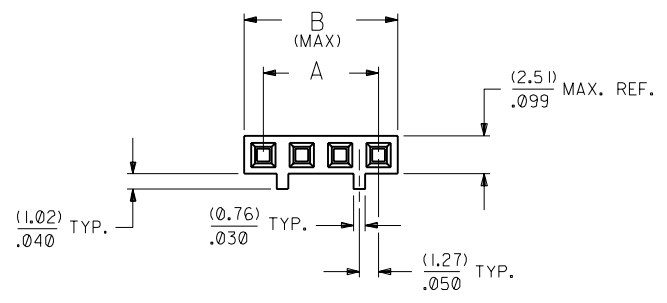
[70058](#), [71851](#)

70066

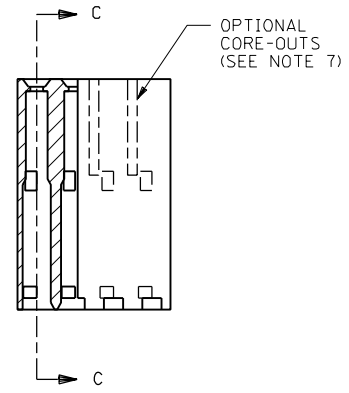
**NOTES:**

- 1) MATERIAL: G.F. POLYESTER
- 2) HOUSING TO BE USE WITH TERMINAL PT. NO. 70058-\*\*\*\*
- 3) SEE CHART FOR CIRCUIT SIZES.
- 4) TO BE USED WITH (0.64)/.025 SQ. OR RD. PINS.
- 5) PARTS STACKABLE END TO END ON (2.54)/.100 CENTERS.
- 6) REFER TO PRODUCT SPECIFICATION NO. : P.S.-70058
- 7) PARTS MAY OR MAY NOT BE SUPPLIED WITH EXTERIOR CORE-OUT CONFIGURATION. SEE DWG. SD-70066-\*\*\*\* FOR OPTIONAL HOUSING DETAILS.
- 8) PACKAGE PER PK-70066-100.

**OPTION "C"**



SECTION C-C



| CKT. SIZE | EDP. NO.   | ENG. NO.   | A             | B             |
|-----------|------------|------------|---------------|---------------|
| 2         | 50-57-9202 | 70066-0071 | (2.54)/.100   | (5.05)/.199   |
| 3         | 50-57-9203 | 70066-0072 | (5.08)/.200   | (7.59)/.299   |
| 4         | 50-57-9204 | 70066-0073 | (7.62)/.300   | (10.13)/.399  |
| 5         | 50-57-9205 | 70066-0074 | (10.16)/.400  | (12.67)/.499  |
| 6         | 50-57-9206 | 70066-0075 | (12.70)/.500  | (15.21)/.599  |
| 7         | 50-57-9207 | 70066-0076 | (15.24)/.600  | (17.75)/.699  |
| 8         | 50-57-9208 | 70066-0077 | (17.78)/.700  | (20.29)/.799  |
| 9         | 50-57-9209 | 70066-0078 | (20.32)/.800  | (22.83)/.899  |
| 10        | 50-57-9210 | 70066-0079 | (22.86)/.900  | (25.37)/.999  |
| 11        | 50-57-9211 | 70066-0080 | (25.40)/1.000 | (27.91)/1.099 |
| 12        | 50-57-9212 | 70066-0081 | (27.94)/1.100 | (30.45)/1.199 |
| 13        | 50-57-9213 | 70066-0082 | (30.48)/1.200 | (32.99)/1.299 |
| 14        | 50-57-9214 | 70066-0083 | (33.02)/1.300 | (35.53)/1.399 |
| 15        | 50-57-9215 | 70066-0084 | (35.56)/1.400 | (38.07)/1.499 |
| 16        | 50-57-9216 | 70066-0085 | (38.10)/1.500 | (40.61)/1.599 |
| 17        | 50-57-9217 | 70066-0086 | (40.64)/1.600 | (43.15)/1.699 |
| 18        | 50-57-9218 | 70066-0087 | (43.18)/1.700 | (45.69)/1.799 |
| 19        | 50-57-9219 | 70066-0088 | (45.72)/1.800 | (48.23)/1.899 |
| 20        | 50-57-9220 | 70066-0089 | (48.26)/1.900 | (50.77)/1.999 |
| 21        | 50-57-9221 | 70066-0090 | (50.80)/2.000 | (53.31)/2.099 |
| 22        | 50-57-9222 | 70066-0091 | (53.34)/2.100 | (55.85)/2.199 |
| 23        | 50-57-9223 | 70066-0092 | (55.88)/2.200 | (58.39)/2.299 |
| 24        | 50-57-9224 | 70066-0093 | (58.42)/2.300 | (60.93)/2.399 |
| 25        | 50-57-9225 | 70066-0094 | (60.96)/2.400 | (63.47)/2.499 |

|  |  |  |  |  |  |                                     |  |  |  |
|--|--|--|--|--|--|-------------------------------------|--|--|--|
| DIMENSIONS SHOWN (METRIC) INCH<br>UNLESS OTHERWISE SPECIFIED<br>TOLERANCES: ANGULAR ± 1/2° |  | REVISIONS PER ECR# U10967 8-8-91 MJM/MGB   |  | REVISIONS PER ECR# UB0051 3-27-89 MCB                          |  | REDRAWN ON CAD ECR # 9120 5/5/86 WZ |  | DRAFT WHERE APPLICABLE MUST REMAIN WITHIN DIMENSIONS |  |
| 5 PLACE ± .010 ---<br>2 PLACE ± .014 ± 0.25<br>1 PLACE --- ± 0.35                          |  | INCH METRIC  |  | ADD PKG NOTE ECN UDT2000-0468 SCHAFFER 99/12/1                 |  | REVISIONS                           |  | REVISIONS  |  |
| DRWG. BY: RS<br>APP'D. BY: RL  |  | CHK'D. BY: WZ<br>SCALE: 4:1  |  | TITLE: HOUSING CONNECTOR (2.54)/.100 GRID STACKABLE SINGLE ROW |  | SHEET NO. 1<br>DATE: 03/26/86       |  | MFG. SH. REV.  |  |
| FILE NAME: 700660071   |  | THIS DRAWING CONTAINS INFORMATION THAT IS PROPRIETARY TO MOLEX INC. AND SHOULD NOT BE USED WITHOUT WRITTEN PERMISSION. |  | MOLEX INCORPORATED<br>L1SLE,ILL. 60532 U.S.A.                  |  | SD-70066-0071-0094                  |  | SIZE: DA   C   |  |